








The calibration carry case CALIWELD GCU 1.0 can check the good operation of all welding machines (MIG/MAG, TIG, MMA). It is essential for compliance with the EN 50504 and EN 60974-14 standard and for performing PQR (Procedure Qualification Record) and WPS (Welding Procedure Specification). The comprehensive software can save and load all welding settings.

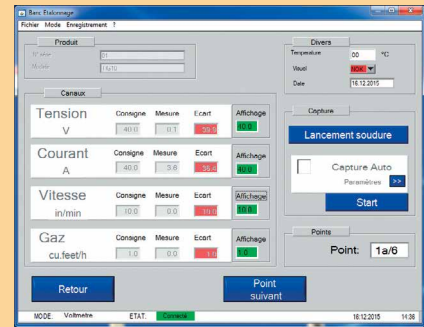
CARRY CASE CONTENT

EQUIPMENT DEPENDING ON THE OPERATING MODE AND THE WELDING PROCESS

SELECTED WELDING PROCESS	Base	OPERATION PERFORMED	
		Calibration	or PQR/WPS
MIG		 <i>Option</i>	 <i>Option</i>
TIG			
MMA			



Included software
6 languages (FR/EN/DE/ES/IT/HU)



OPTIONS

Ref. 060517 : MIG/MAG WIRE SPEED SENSOR CALIWELD SWM1

The sensor measure the wire speed between the wire reel and the wire feeder.

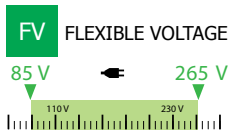
Ref. 060524 : MEASURE CABLE FOR MIG/MAG CALIBRATION 2M CALIWELD ECM1 - EURO/GCU1.0

Ref. 060647 : 2 CONNECTION CABLES 2m CALIWELD LOAD 3% WITH CARRY CASE

Ref 060418 : RESISTIVE LOAD - 320A at 100% (MIG)

Ref. 060425 : RESISTIVE LOAD - 550A at 50% (MIG)

SPECIFICATIONS



The carry case features Flexible Voltage (FV) and can handle power supply voltage from 85 to 265V.



The case is shock and weather resistant (IP67).

PACKS CALIWELD

Ref. 060630 CALIBRATION KIT CALIWELD (060456 + 060425 + 060647 + 060524)

Ref. 060654 CALIWELD CALIBRATION PACK (060456 + 060524)

Ref. 060661 CALIWELD TRACKING PACK (060456 + 060517)

Internet links
(clickable) :



pdf instruction manual



video - demonstration

Supply	Technical specifications					Dimensions	
	Measuring type	Voltage (U)	Intensity (I)	Wire speed ⚙	All gas	H	L
		TRMS / Moy / Instant	TRMS / Moy / Instant				
230V - 1 ph	Measuring range	1 - 120 V (±0.5%)	1 - 500 A (±0.5%)	1 - 30 m/min (±1%)	1 - 30 L/min (±5%)	21 x 43 x 57 cm	12 kg