

The PROTIG 201 AC/DC is a professional TIG welding solution for welding all metal types up to 4 mm thick (steel, stainless steel, aluminium, copper and titanium). It ensures a very high level of precision in many areas such as production, maintenance or pipe work.

## Six AC/DC TIG processes

- **Welding current:** 10 - 200 A (ACTIG), 10 - 160 A (DCTIG)
- **STANDARD DC TIG:** Ensures high-quality welding on all ferrous materials, such as steel, stainless steel as well as copper, its alloys and titanium, etc.
- **PULSED DC TIG:** Controls the melting temperature, limits deformation and allows sheet metal from 0.3 mm thick to be assembled effectively.
- **SPOT DC TIG:** Pre-assemble ferrous metals by spot welding them together.
- **EASY AC TIG:** Makes using the welding machine even easier thanks to predefined user settings. The operator only has to select the tungsten electrode's diameter on the machine's control panel.
- **STANDARD AC TIG:** Designed for welding aluminium and its alloys (Al, AlSi, AlMg and AlMn, etc.). An alternating current effectively cleans the aluminium for perfect welds.
- **SPOT AC TIG:** Pre-assemble aluminium parts and accessories by spot welding them together.

## Two coated-electrode welding modes

- **Welding current:** From 10 - 160 A (MMA)
- **STANDARD MMA:** Uses basic and rutile electrodes up to Ø 4 mm.
- **PULSED MMA:** Makes it easier to weld in a vertical-upright position (nozzles/pipelines).

## Designed for user comfort

- **Two ignition types:** HF (without contact) or ARC-LIFT (with contact) for electro-sensitive environments.
- **Three trigger management modes:**
  - 2T: Maintains pressure on the trigger throughout the welding process.
  - 4T: To start welding, press the trigger once and then press the trigger again to stop the welding process.
  - 4T «LOG»: The operator can switch between two separate welding currents by quickly pressing the trigger (hot and cold current).
- **MMA welding aids:**
  - Anti-Stick: Reduces the risks of the electrode sticking to the workpiece if it comes into contact with it.
  - Hot Start: Assists in igniting the arc and can be adjusted according to the type of metal being welded.
  - Arc Force: This fully adjustable feature regulates the arc length deviations.
- **VRD (voltage reduction device):** the welding current is only delivered when the electrode is in contact with the workpiece (not originally activated).

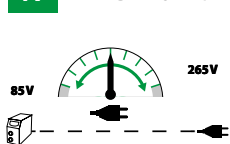
## Robust design for all environments

- Equipped with a **reinforced chassis and anti-shock protections**
- **Compact and lightweight design**
- **Current/Voltage displayed after welding (DMOS/QMOS)**
- Stores up to 50 welding programs per process
- **Remote control connections**

## HIGH-TECH POWER SUPPLY

### flexible

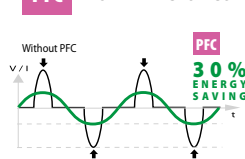
#### FV FLEXIBLE VOLTAGE



This device works on a simple 230 V/16 A or 110 V/20 A plug socket, even during intensive, on-site usage or when used on a site extension (100 m).

### Économique

#### PFC POWER FACTOR CORRECTION 30% energy saved



PFC technology suppresses voltage peaks and regulates the supply current. It also enables the machine to operate on extension cables or a battery-based power source as well as contributing to better current stability during the welding phase.

### Safe

#### P400 PROTEC 400

Makes the device able to withstand occasional or permanent voltage variations on the electrical supply network up to 400 V (lightning, power sources, load discharging, etc.).



without accessories: PN. 061828

with accessories: PN. 063945  
- SR26DB torch (4 m)  
- MMA kit

## Accessories (optional extras)



Sack truck  
PN. 076341



Trolley  
PN. 041257



Manual remote control  
PN. 045675



Foot pedal  
PN. 045682

50/60Hz	TIG AC	TIG DC	Mma	EN60974-1 (40 °C)			U <sub>0</sub>	cm / kg	Protected & compatible POWER GENERATOR (+/- 15%)
				I <sub>2</sub>	I <sub>A</sub> (60%)	X% (I <sub>2</sub> max)			
230 V 1 ~	16 A	10-200 A	10-160 A	Mma	TIG DC	TIG AC	70 V	35/50	24 x 41 x 36 / 15 kg
110 V 1 ~	32 A	10-160 A	10-160 A	110 A	110 A	110 A			
			10-110 A	90 A	100 A	100 A	38 %	20 %	20 %